

4.

Rose



Spiny Leaf Gall Wasp
Diplolepis polita



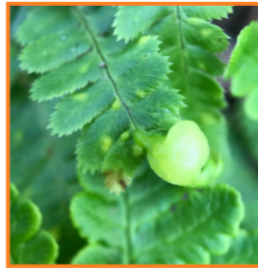
Rose Gall Wasp
Diplolepis rosaefolii

Gooseberry



Currant Leaf Gall Mite
Eriophyes breakeyi

Ferns



Fern Leaf Curl Fungus
Taphrina californica

Cottonwood



Poplar Petiole Gall Aphid
Pemphigus populitransversus



Gall Midge or Aphid??

CA Sagebrush

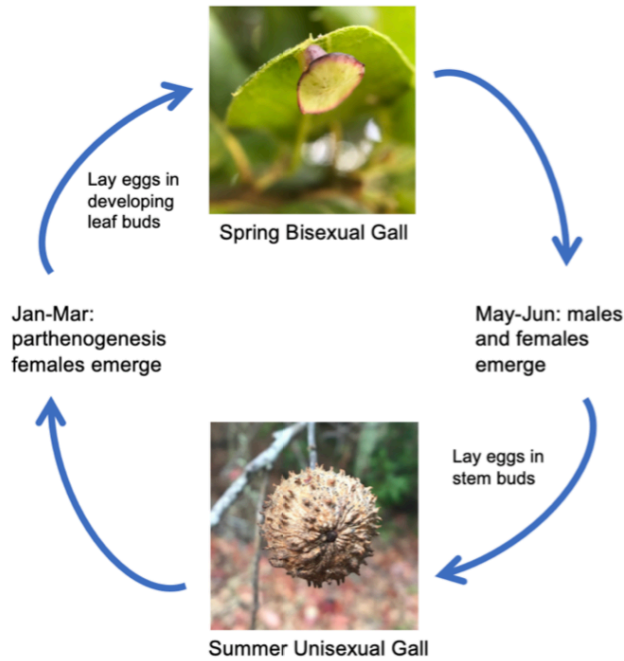


Sagebrush Woolly Stem
Gall Midge
Rhopalomyia floccosa



California Sagebrush Gall Mite
Aceria paracalifornica

5.



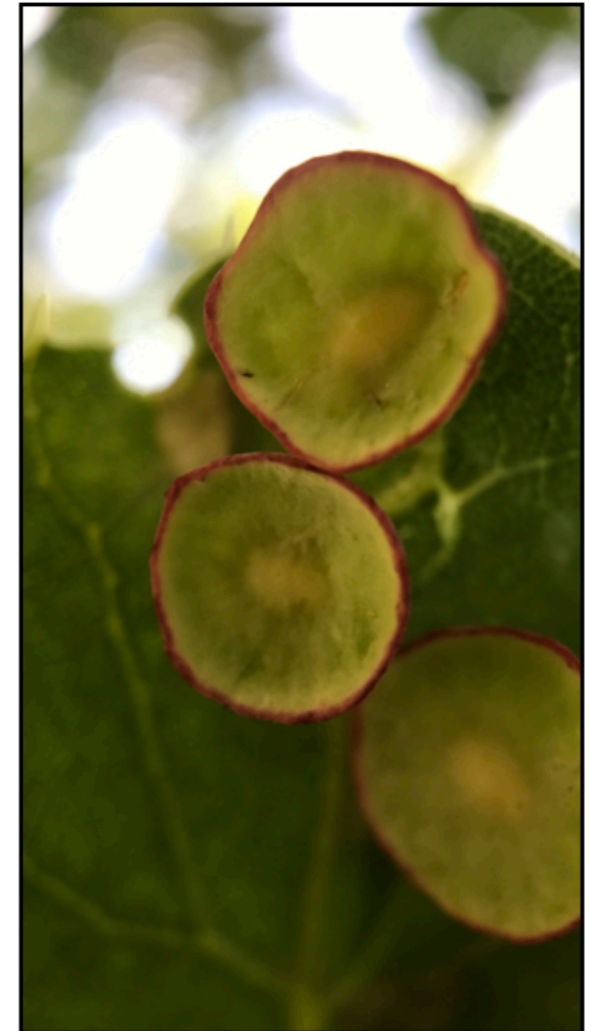
Live Oak Apple Gall Wasp (*Callirhytis quercuspomiformis*)

* key: host plant in Green; type of organism: Black - gall wasps, Yellow - sawflies, Green - gall midge, Blue - moth, Light blue - aphids, Red - mites, Orange - rusts.

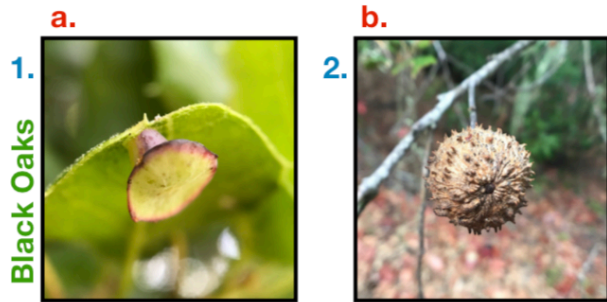
Names following www.inaturalist.org.
More information: http://joycegross.com/galls_ca_oak.php
For future event: BioBlitz.club

Bay Area Spring Galls

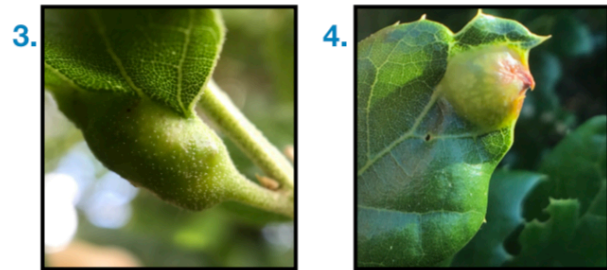
Merav Vonshak



Live Oak Apple Gall Wasp, spring generation
Callirhytis quercuspomiformis



Live Oak Apple Gall Wasp (*Callirhytes quercuspomiformis*)
Spring Bisexual Gall (L); Summer Unisexual Gall (R)



Live Oak Petiole Gall Wasp *Callirhytes flora*
Ball Gall Wasp *Callirhytes perfoveata*



Kernel Flower Gall Wasp (*Callirhytes serricornis*)
Spring Bisexual Gall (L); Summer Unisexual Gall (R)



Two-horned Gall Wasp (*Dryocosmus dubiosus*)
Spring Bisexual Gall (L); Summer Unisexual Gall (R)



Mottled Acorn Gall Wasp *Callirhytes carmelensis*
Sausage Flower Gall Wasp *Callirhytes congregata*



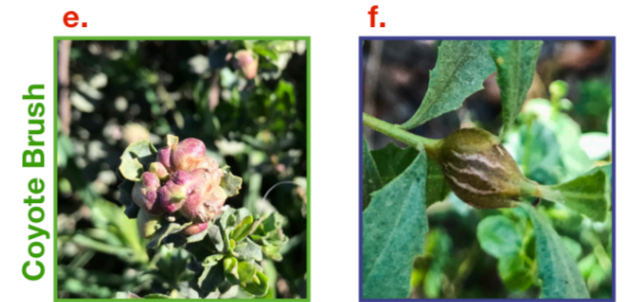
Live Oak Bud Gall Wasp *C. quercusagrifoliae*
Pumpkin Gall Wasp *Dryocosmus minusculus*



Striped Volcano Gall Wasp *Andricus atrimentus*
California Gall Wasp *A. quercuscalifornicus*



CA Jumping Gall Wasp *Neuroterus saltatorius*
White Sage Leaf Gall Midge *Rhopalomyia audibertiae*



CB Bud Gall Midge *Rhopalomyia californica*
Coyote Brush Stem Gall Moth *Gnorimoschema baccharisella*



Coyote Brush Rust *Puccinia evadens*
Willow Apple Gall Sawfly *Pontania californica*



Willow Stem Gall Sawfly *Euura* sp.
Willow Gall Mite *Aculops tetanothrix*



Poison Ivy Leaf Mite *Aculops rhois*
Manzanita Leafgall Aphid *Tamalia coweni*